

# KINGSWOOD CROSSING

1715 E 13TH STREET, BROOKLYN, NY 11229



## PROPERTY HIGHLIGHTS

**METRO AREA:** NY/NJ

**COUNTY:** Kings County

Kingswood Crossing is located along the Kings Highway commercial corridor in the Midwood neighborhood of south-central Brooklyn. Anchored by Target and Marshalls, as well as 49,000 SF of Class A office space, the property is in a densely populated area featuring close to 1 million residents within 3-miles.

**TOTAL SF**  
112,752

**ACRES**  
0.5

**PARKING SPACES**  
0

**PARKING RATIO**  
0:1,000 SF

**CENTER TYPE**  
Street Retail Bldg

## DEMOGRAPHICS 3-MILE RADIUS

 **896,923**  
POPULATION

 **38.4**  
MEDIAN AGE

 **\$95,960**  
AVERAGE HHI

 **36.0%**  
COLLEGE  
EDUCATED

### LEASING AGENTS

JOSHUA BIRNS | jbirns@uedge.com | 212-956-2235

### SPECIALTY LEASING

PATRICIA ZAFFERESE | pzafferese@uedge.com | 201-882-7506

# KINGSWOOD CROSSING

1715 E 13TH STREET, BROOKLYN, NY 11229

## FLOOR 01



#	TENANTS	SQFT
101	Marshalls	2,662
102	Target Corporation	14,184

THIS EXHIBIT SHALL NOT BE DEEMED A WARRANTY, REPRESENTATION OR AGREEMENT BY LANDLORD THAT THE LAYOUT OR CONFIGURATION OF THE SHOPPING CENTER, OR ANY PART THEREOF, SHALL REMAIN AS SHOWN HEREON.

LANDLORD RESERVES THE RIGHT TO MODIFY THE SHOPPING CENTER, OR ANY PART THEREOF, IN ACCORDANCE WITH THE PROVISIONS OF THE LEASE.

# KINGSWOOD CROSSING

1715 E 13TH STREET, BROOKLYN, NY 11229



## FLOOR 02

#	TENANTS	SQFT
201	Target Corporation	19,542



THIS EXHIBIT SHALL NOT BE DEEMED A WARRANTY, REPRESENTATION OR AGREEMENT BY LANDLORD THAT THE LAYOUT OR CONFIGURATION OF THE SHOPPING CENTER, OR ANY PART THEREOF, SHALL REMAIN AS SHOWN HEREON.

LANDLORD RESERVES THE RIGHT TO MODIFY THE SHOPPING CENTER, OR ANY PART THEREOF, IN ACCORDANCE WITH THE PROVISIONS OF THE LEASE.

# KINGSWOOD CROSSING

1715 E 13TH STREET, BROOKLYN, NY 11229



## FLOOR 03

#	TENANTS	SQFT
301	Alneil Associates, NY Corp.	4,833
302	Available	7,800
303	Target Corporation	4,355



THIS EXHIBIT SHALL NOT BE DEEMED A WARRANTY, REPRESENTATION OR AGREEMENT BY LANDLORD THAT THE LAYOUT OR CONFIGURATION OF THE SHOPPING CENTER, OR ANY PART THEREOF, SHALL REMAIN AS SHOWN HEREON.

LANDLORD RESERVES THE RIGHT TO MODIFY THE SHOPPING CENTER, OR ANY PART THEREOF, IN ACCORDANCE WITH THE PROVISIONS OF THE LEASE.

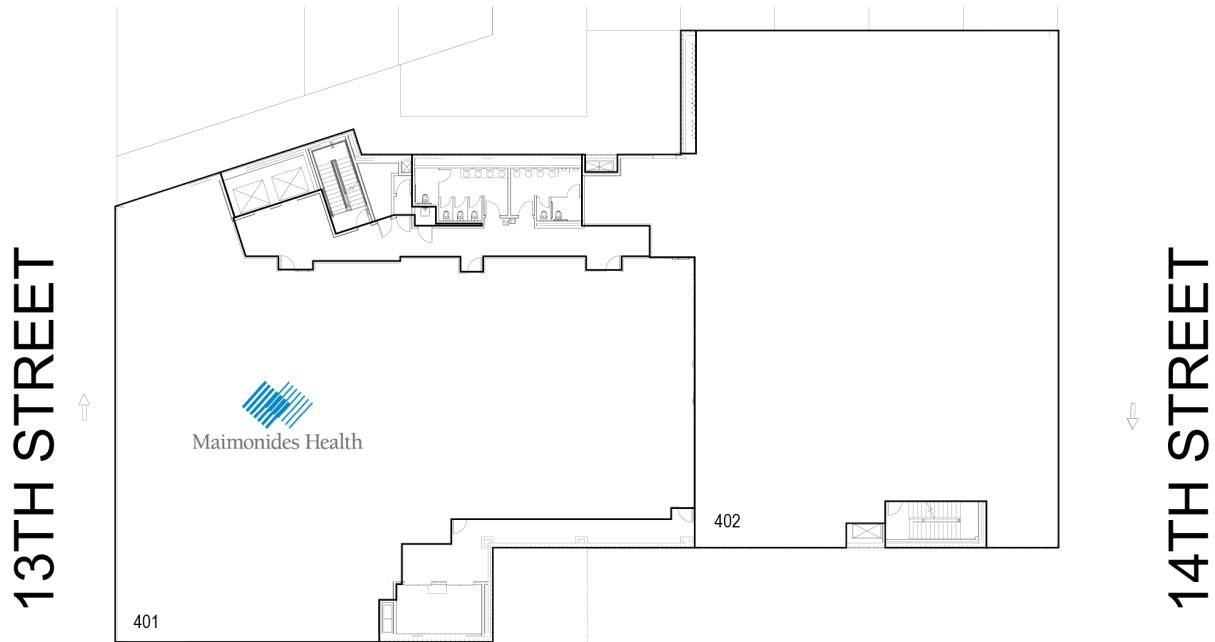
# KINGSWOOD CROSSING

1715 E 13TH STREET, BROOKLYN, NY 11229



## FLOOR 04

#	TENANTS	SQFT
401	Maimonides Medical Center	9,641
402	Available	8,856



THIS EXHIBIT SHALL NOT BE DEEMED A WARRANTY, REPRESENTATION OR AGREEMENT BY LANDLORD THAT THE LAYOUT OR CONFIGURATION OF THE SHOPPING CENTER, OR ANY PART THEREOF, SHALL REMAIN AS SHOWN HEREON.

LANDLORD RESERVES THE RIGHT TO MODIFY THE SHOPPING CENTER, OR ANY PART THEREOF, IN ACCORDANCE WITH THE PROVISIONS OF THE LEASE.

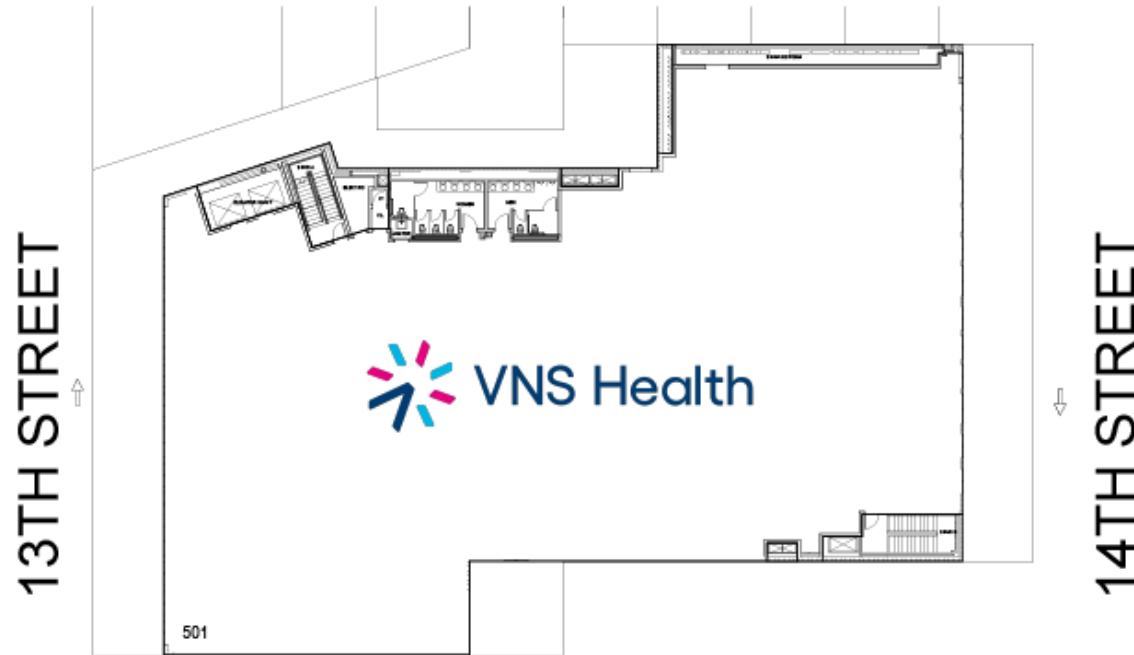
# KINGSWOOD CROSSING

1715 E 13TH STREET, BROOKLYN, NY 11229



## FLOOR 05

#	TENANTS	SQFT
501	VNS Health	21,737



THIS EXHIBIT SHALL NOT BE DEEMED A WARRANTY, REPRESENTATION OR AGREEMENT BY LANDLORD THAT THE LAYOUT OR CONFIGURATION OF THE SHOPPING CENTER, OR ANY PART THEREOF, SHALL REMAIN AS SHOWN HEREON.

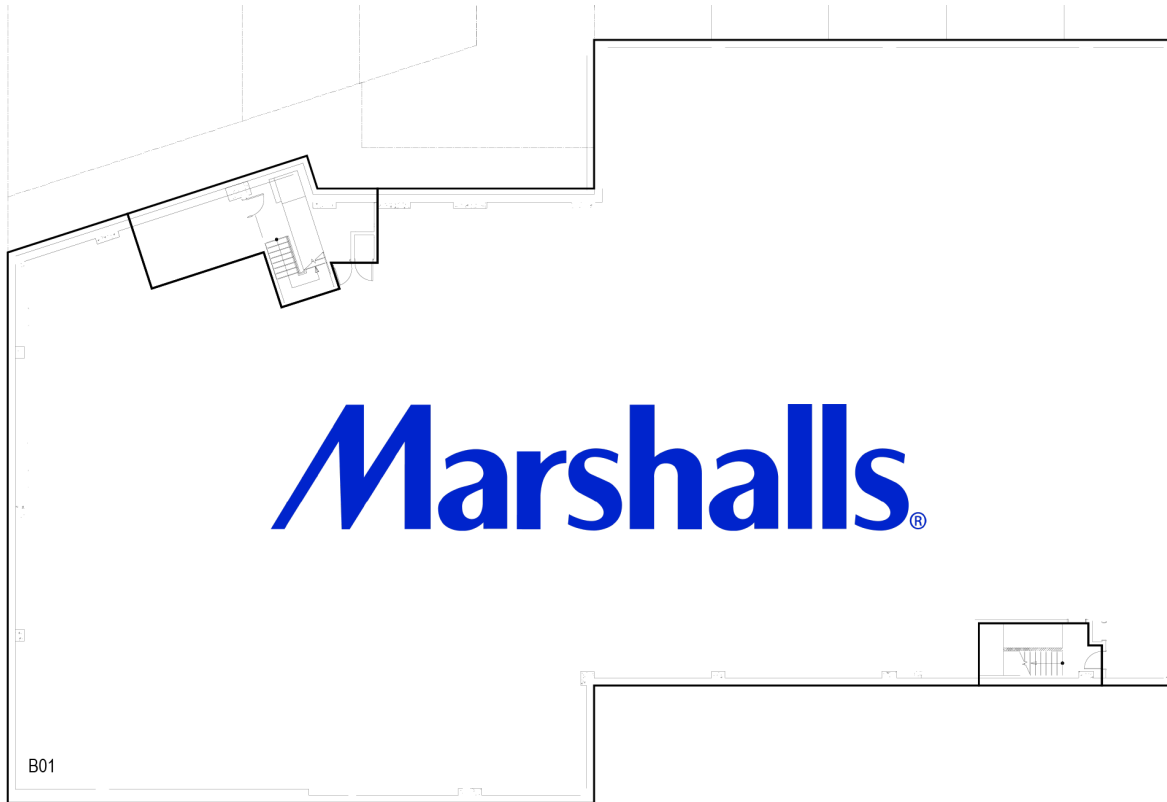
LANDLORD RESERVES THE RIGHT TO MODIFY THE SHOPPING CENTER, OR ANY PART THEREOF, IN ACCORDANCE WITH THE PROVISIONS OF THE LEASE.

# KINGSWOOD CROSSING

1715 E 13TH STREET, BROOKLYN, NY 11229



## FLOOR -01



#	TENANTS	SQFT
B01	Marshalls	19,142

THIS EXHIBIT SHALL NOT BE DEEMED A WARRANTY, REPRESENTATION OR AGREEMENT BY LANDLORD THAT THE LAYOUT OR CONFIGURATION OF THE SHOPPING CENTER, OR ANY PART THEREOF, SHALL REMAIN AS SHOWN HEREON.

LANDLORD RESERVES THE RIGHT TO MODIFY THE SHOPPING CENTER, OR ANY PART THEREOF, IN ACCORDANCE WITH THE PROVISIONS OF THE LEASE.