

KINGSWOOD CROSSING

1715 E 13TH STREET, BROOKLYN, NY 11229

FLOOR 01



#	TENANTS	SQFT
101	Marshalls	2,662
102	Target Corporation	14,184

THIS EXHIBIT SHALL NOT BE DEEMED A WARRANTY, REPRESENTATION OR AGREEMENT BY LANDLORD THAT THE LAYOUT OR CONFIGURATION OF THE SHOPPING CENTER, OR ANY PART THEREOF, SHALL REMAIN AS SHOWN HEREON.

LANDLORD RESERVES THE RIGHT TO MODIFY THE SHOPPING CENTER, OR ANY PART THEREOF, IN ACCORDANCE WITH THE PROVISIONS OF THE LEASE.

KINGSWOOD CROSSING

1715 E 13TH STREET, BROOKLYN, NY 11229



FLOOR 02

#	TENANTS	SQFT
201	Target Corporation	19,542



THIS EXHIBIT SHALL NOT BE DEEMED A WARRANTY, REPRESENTATION OR AGREEMENT BY LANDLORD THAT THE LAYOUT OR CONFIGURATION OF THE SHOPPING CENTER, OR ANY PART THEREOF, SHALL REMAIN AS SHOWN HEREON.

LANDLORD RESERVES THE RIGHT TO MODIFY THE SHOPPING CENTER, OR ANY PART THEREOF, IN ACCORDANCE WITH THE PROVISIONS OF THE LEASE.

KINGSWOOD CROSSING

1715 E 13TH STREET, BROOKLYN, NY 11229



FLOOR 03

#	TENANTS	SQFT
301	Alneil Associates, NY Corp.	4,833
302	Available	7,800
303	Target Corporation	4,355



THIS EXHIBIT SHALL NOT BE DEEMED A WARRANTY, REPRESENTATION OR AGREEMENT BY LANDLORD THAT THE LAYOUT OR CONFIGURATION OF THE SHOPPING CENTER, OR ANY PART THEREOF, SHALL REMAIN AS SHOWN HEREON.

LANDLORD RESERVES THE RIGHT TO MODIFY THE SHOPPING CENTER, OR ANY PART THEREOF, IN ACCORDANCE WITH THE PROVISIONS OF THE LEASE.

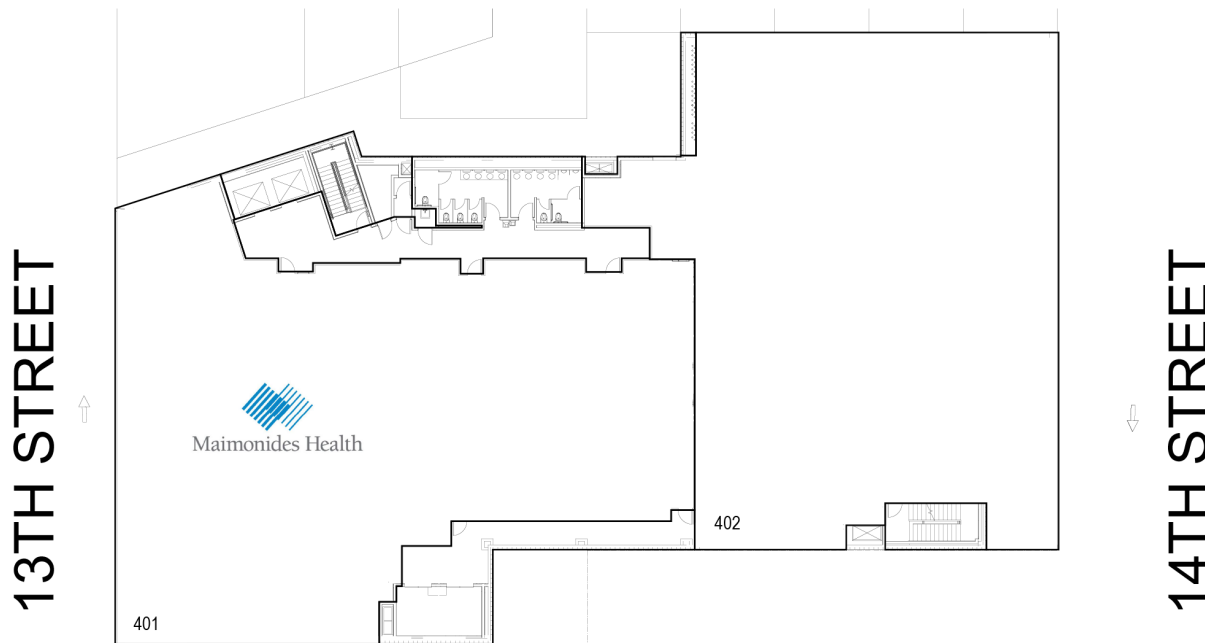
KINGSWOOD CROSSING

1715 E 13TH STREET, BROOKLYN, NY 11229



FLOOR 04

#	TENANTS	SQFT
401	Maimonides Medical Center	9,641
402	Available	8,856



THIS EXHIBIT SHALL NOT BE DEEMED A WARRANTY, REPRESENTATION OR AGREEMENT BY LANDLORD THAT THE LAYOUT OR CONFIGURATION OF THE SHOPPING CENTER, OR ANY PART THEREOF, SHALL REMAIN AS SHOWN HEREON.

LANDLORD RESERVES THE RIGHT TO MODIFY THE SHOPPING CENTER, OR ANY PART THEREOF, IN ACCORDANCE WITH THE PROVISIONS OF THE LEASE.

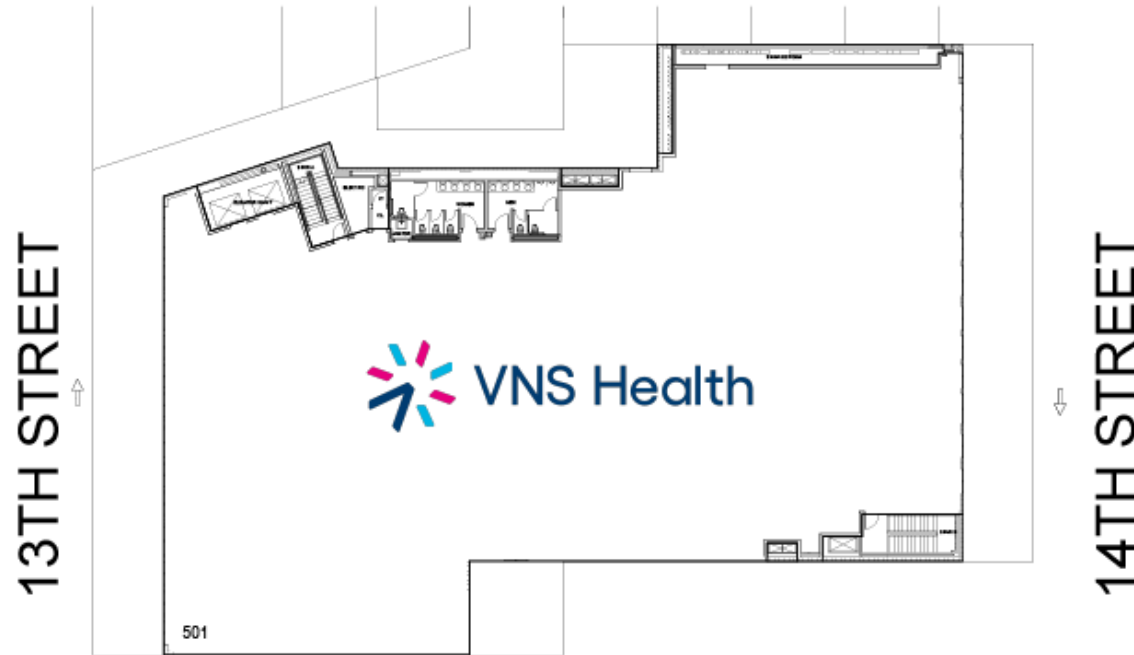
KINGSWOOD CROSSING

1715 E 13TH STREET, BROOKLYN, NY 11229



FLOOR 05

#	TENANTS	SQFT
501	VNS Health	21,737



THIS EXHIBIT SHALL NOT BE DEEMED A WARRANTY, REPRESENTATION OR AGREEMENT BY LANDLORD THAT THE LAYOUT OR CONFIGURATION OF THE SHOPPING CENTER, OR ANY PART THEREOF, SHALL REMAIN AS SHOWN HEREON.

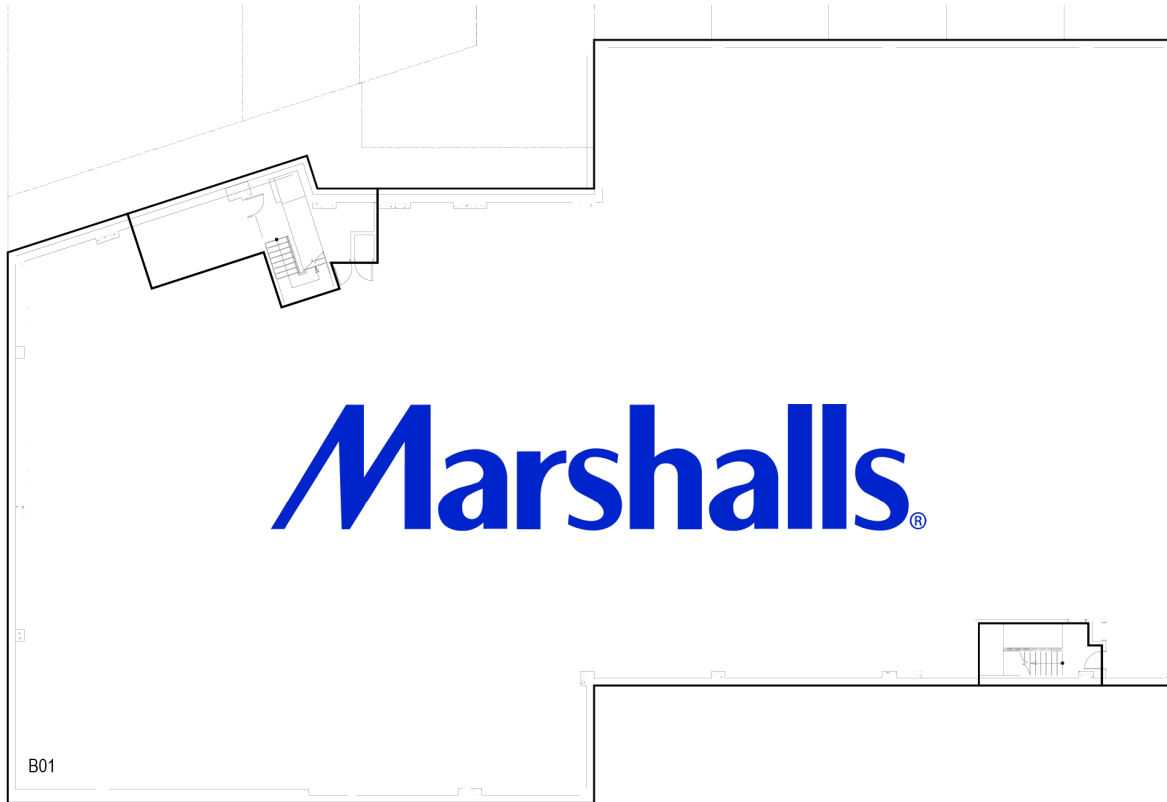
LANDLORD RESERVES THE RIGHT TO MODIFY THE SHOPPING CENTER, OR ANY PART THEREOF, IN ACCORDANCE WITH THE PROVISIONS OF THE LEASE.

KINGSWOOD CROSSING

1715 E 13TH STREET, BROOKLYN, NY 11229



FLOOR -01



#	TENANTS	SQFT
B01	Marshalls	19,142

THIS EXHIBIT SHALL NOT BE DEEMED A WARRANTY, REPRESENTATION OR AGREEMENT BY LANDLORD THAT THE LAYOUT OR CONFIGURATION OF THE SHOPPING CENTER, OR ANY PART THEREOF, SHALL REMAIN AS SHOWN HEREON.

LANDLORD RESERVES THE RIGHT TO MODIFY THE SHOPPING CENTER, OR ANY PART THEREOF, IN ACCORDANCE WITH THE PROVISIONS OF THE LEASE.